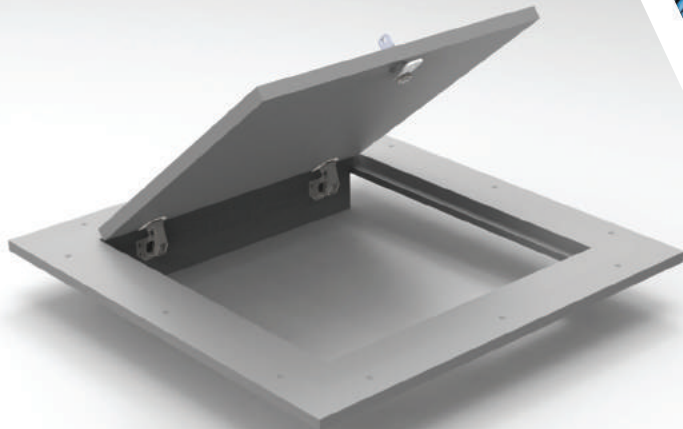




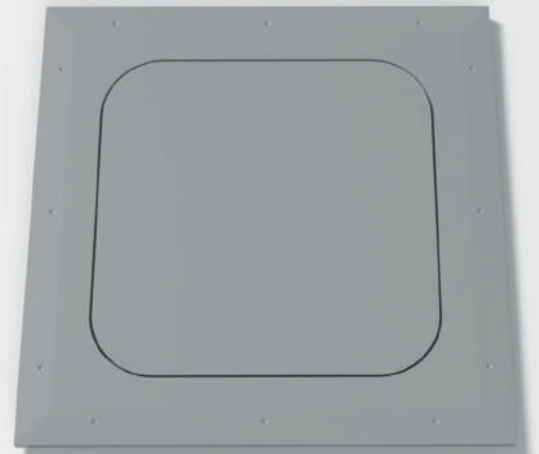
# CASTLE GFRC ACCESS PANELS

Innovative Design for both Ceiling and Wall Application, blends seamlessly into surrounding drywall for a monolithic appearance.

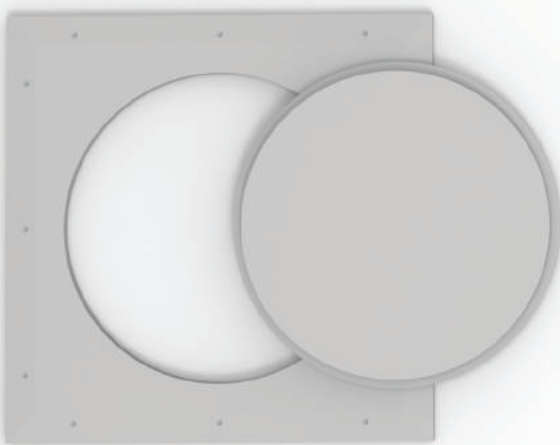
Consist of a surround frame and either a drop-in door or hinged-door.



**HINGED**  
Square or Radius Corner



**POP-OUT**  
Square or Radius Corner



**POP-OUT**  
Round

- \* Glass Fiber Reinforced Cement
- \* Tapered Edge for Tape Joint
- \* Concealed Hinged
- \* Moisture Resistant
- \* Easily textured
- \* Single Trade Installation

- ✓ Corporate
- ✓ Hospitality
- ✓ Retail
- ✓ Commercial
- ✓ Institutional
- ✓ Residential

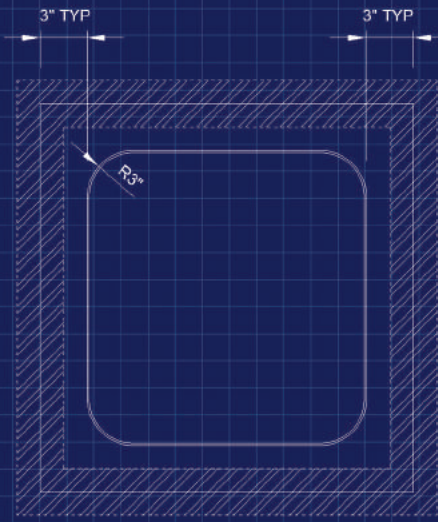


**CASTLE**  
Access Panels & Forms Inc.

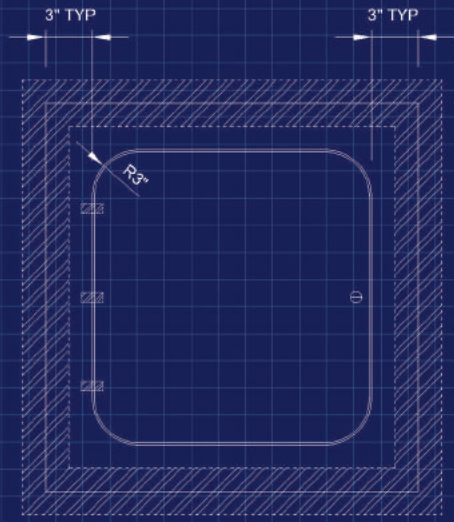
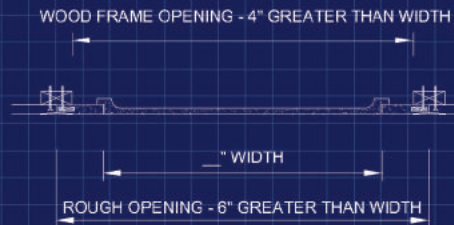
# CASTLE GFRC ACCESS PANELS

## TECHNICAL DATA

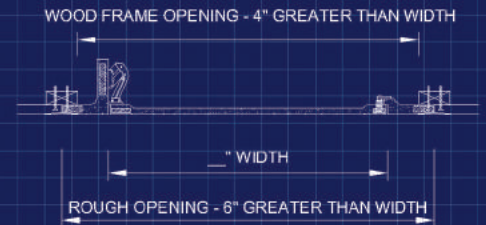
- \* Shell Thickness  
1/8" to 3/16"
- \* Fastener Test Pull Out (Wood Stud)  
525 lb avg.
- \* Fastener Test Pull Out (Metal Stud)  
215 lb avg.
- \* Fastener Push Through Test  
350 lb avg.
- \* Fuel Contribution (ASTM E84-80)  
0
- \* Flame Spread (ASTM E84-80)  
0
- \* Smoke Index (ASTM E84-80)  
0
- \* Combustion (ASTM E84-80)  
Non-combustible
- \* Class A non-rated  
-
- \* CSI Code  
CSI #08310



**POP-OUT SECTION**



**HINGED SECTION**



- \* Glass Fiber Reinforced Cement
- \* ASTM E84-80 Class A Non-Rated
- \* Neoprene Gasket Available
- \* Custom Size Available
- \* Locks available as Slotted Cam Latch or Keyed Alike Cam Latch

PRODUCT CODE		DIMENSION	
POP-OUT	HINGED	ACCESS OPENING	ROUGH OPENING
GFRC - 580009	GFRC - HG- 580009	9" x 9"	15" x 15"
GFRC - 580012	GFRC - HG- 580012	12" x 12"	18" x 18"
GFRC - 580016	GFRC - HG- 580016	16" x 16"	22" x 22"
GFRC - 580018	GFRC - HG- 580018	18" x 18"	24" x 24"
GFRC - 580024	GFRC - HG- 580024	24" x 24"	30" x 30"



**CASTLE**  
Access Panels & Forms Inc.

### CASTLE ACCESS PANELS & FORMS INC

**ADDRESS:** 173 Adesso Dr, Unit 2, Concord, ON L4K 3C3

**PHONE:** (905) 738-8089

**FAX:** (905) 760-9234

**WEBSITE:** [www.castleaccesspanel.com](http://www.castleaccesspanel.com)

**EMAIL:** [sale@castleaccesspanel.com](mailto:sale@castleaccesspanel.com)