



## CREATING SEAMLESS SOLUTIONS

Seamless<sup>TM</sup> Access Panels by Castle are manufactured direct from GFRG & 70% post-consumer recycled glass, for a unique **GREEN** design-matrix designed to blend seamlessly into your ceiling.

They consist of a surround frame and a drop-in door. Available in Twenty standard residential or commercial sizes, Castle panels are perfect for jobs where access is required at regular intervals.

Lightweight and easily textured, the panels can be used in both new and retrofit construction across unlimited applications.

Their smart design helps contractors to work smarter, faster and better, the Seamless<sup>TM</sup> panels feature a tapered edge for tape joints and won't shrink, crack or sag. Seamless<sup>TM</sup> Access Panels provide an aesthetically pleasing solution for a more attractive interior.

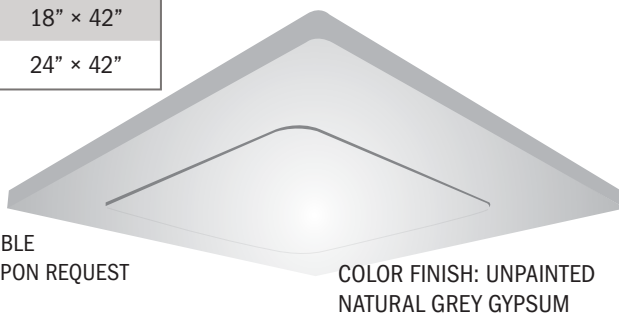
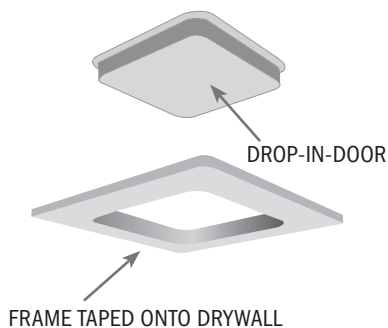
## PRODUCT FEATURES

- Tapered edge for tape joint
- Lightweight
- No shrinking, cracking, sagging or rusting
- Concealed hinge
- Moisture resistant
- Easily textured
- Single trade installation
- Blends seamlessly into surrounding drywall
- Reduce labor cost
- Zero mold & fungus growth

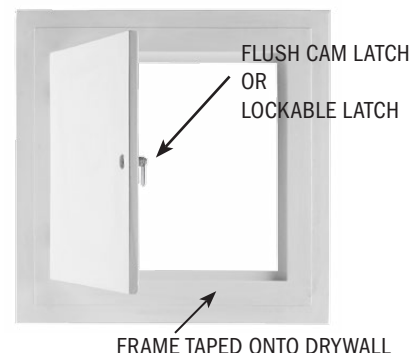
### POP-OUT ACCESS PANELS

Square or Radius Corners

| Part Code | Access Opening | Rough Opening |
|-----------|----------------|---------------|
| 580009    | 9" x 9"        | 15" x 15"     |
| 580012    | 12" x 12"      | 18" x 18"     |
| 581218    | 12" x 18"      | 18" x 24"     |
| 580016    | 16" x 16"      | 22" x 22"     |
| 580018    | 18" x 18"      | 24" x 24"     |
| 580020    | 20" x 20"      | 26" x 26"     |
| 580024    | 24" x 24"      | 30" x 30"     |
| 580030    | 30" x 30"      | 36" x 36"     |
| 581236    | 12" x 36"      | 18" x 42"     |
| 581836    | 18" x 36"      | 24" x 42"     |



CUSTOM SIZES AVAILABLE  
ROUND POP-OUT PANELS AVAILABLE  
NEOPRENE GASKET AVAILABLE UPON REQUEST



### HINGED ACCESS PANELS

| Part Code | Access Opening | Rough Opening |
|-----------|----------------|---------------|
| HG-580009 | 9"x 9"         | 15"x 15"      |
| HG-580012 | 12"x 12"       | 18"x 18"      |
| HG-580016 | 16"x 16"       | 22"x 22"      |
| HG-580018 | 18"x 18"       | 24"x 24"      |
| HG-580024 | 24"x 24"       | 30"x 30"      |

CUSTOM SIZES AVAILABLE  
NEOPRENE GASKET AVAILABLE UPON REQUEST

# POP-OUT & HINGED ACCESS PANELS

## HOW TO INSTALL ACCESS PANELS



1. Frame the opening



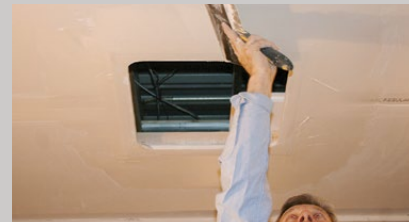
2. Mount Seamless™ surround with drywall with screws



3. Mounted frame



4. Install drywall and place access panel in opening

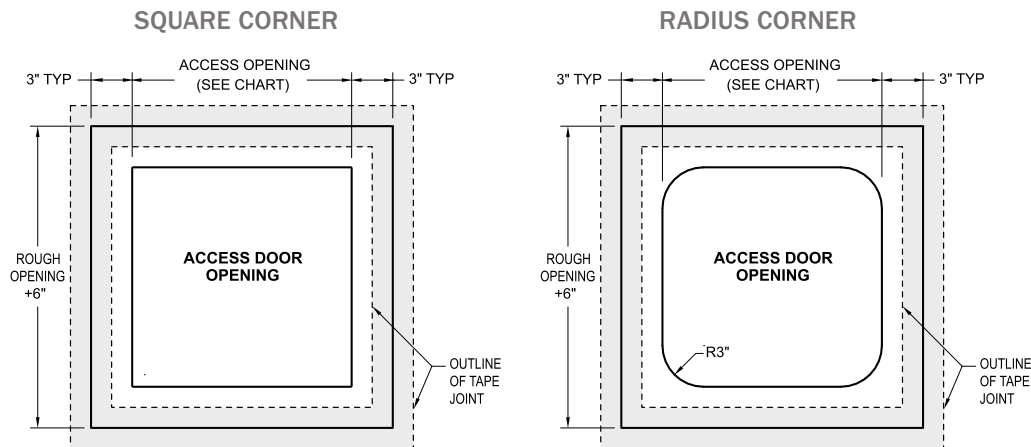


5. Tape and apply drywall compound

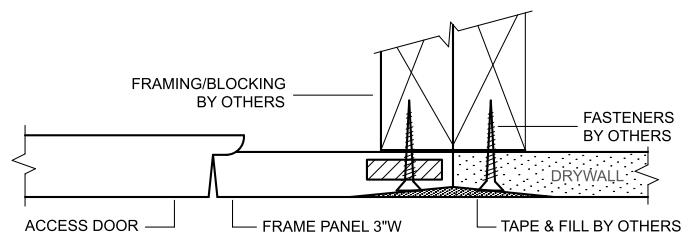


6. Apply desired finish

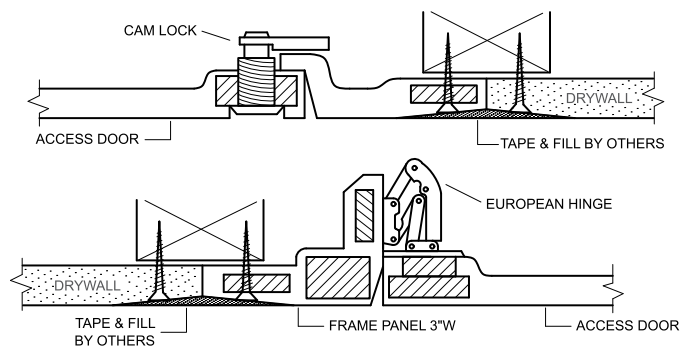
## General Drawing Pop-Out or Hinged



## Pop-Out Specification



## Hinged Specification



Designed for both wall and ceiling applications, the hinged **Seamless™** Panel by **Castle** can be used where a locked door is needed but style must be still maintained.

The hinged panel is great for use in ceiling applications where there is no space to push a door up, and in wall applications when access to plumbing and electrical is needed.

- The Seamless™ Hinged Access and Pop-Out panel consist of a frame door with concealed hinges and a cam or key lock
- Round Pop-Out Panel available in 5 sizes
- **Neoprene Gasket** available for all panels upon request
- These panels require extra reinforcement and a crate/pallet to ship
- Ships directly from the manufacturing plant in Concord, ON, Canada

## SEAMLESS PANELS TECHNICAL DATA

|  |                 |
|--|-----------------|
| Shell Thickness.....                     | 1/8"~ 3/16"     |
| Fastener Test Pull Out (wood stud) ..... | 525 lb avg.     |
| Fastener Test Pull Out (metal stud)..... | 215 lb avg.     |
| Fastener Push Through Test .....         | 350 lb avg.     |
| Fuel Contribution (ASTM E84-80) .....    | 0               |
| Flame Spread (ASTM E84-80) .....         | 0               |
| Smoke Index (ASTM E84-80) .....          | 0               |
| Combustion (ASTM E84-80) .....           | Non-combustible |
| Class A Non-Rated.....                   | —               |

## CASTLE ACCESS PANELS & FORMS INC.

173 Adesso Dr. Unit 2, Concord, ON L4K 3C3, Canada  
www.CastleAccessPanels.com

Phone: (905) 738-8089

Fax: (905) 760-9234

E-mail: inquiries@castleaccesspanels.com